

▶ Great Performance Requires Flexibility



The Hemostatic HemCon® Patch Delivers Results

Ideal for use after interventional and diagnostic catheterization procedures by providing the ultimate in patient care while maximizing savings.

HemCon Patches offer:

- Flexible & contouring design
- Ability to feel patient's pulse
- Clear backing for improved patient monitoring

Enhance Your Direct Pressure Protocol

- Stop severe bleeding quickly and safely
- Effective on anticoagulated patients
- Provide an antibacterial barrier
- Maximize limited staff with decreased hold times and ambulation periods
- Low-cost solution to increase performance

ATTENTION: Infection Control

Hemostatic HemCon dressings offer an antibacterial barrier against a wide range of microorganisms including MRSA, VRE, *A. baumannii**. This barrier may help prevent the risk of infection and aid hospital-wide infection management practices.

**Only single strains of most species have been studied.*



Shown to have contributed to hospital savings of up to **\$75,000 annually.**

HemCon® Patch 1.5" x 1.5" (HEM260)

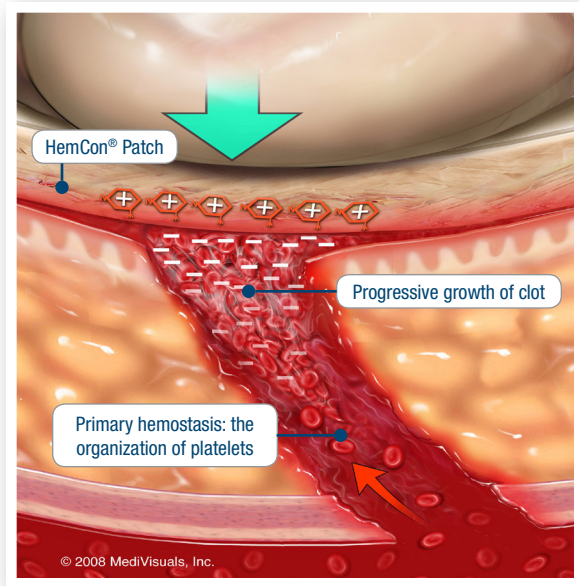
10 bandages/bx, 100 bandages/cs

"I like to use HemCon dressings because they are well priced and effective compared to other patches. My patients are also well satisfied. Since the bleeding is stopped faster, patients experience less down time and are able to get out of bed sooner than with other blood control products."

Dr. Ziyad Hijazi, Congenital/Structural Cardiologist
– Rush University Medical Center



How HemCon Dressings Work



Hemostasis is achieved after sheath removal following catheterization, interventional radiology, and electrophysiology procedures with the HemCon Patch and digital pressure.

HemCon products are fabricated from chitosan, a naturally occurring, biocompatible polysaccharide. Chitosan has a positive charge and it attracts red blood cells and platelets, which have a negative charge. As the red blood cells and platelets are drawn towards the bandage through this ionic interaction, a strong seal is formed at the dermal wound site. This supportive, primary seal allows the body to effectively activate its coagulation pathway, initially forming organized platelets. The platelets and red blood cells continue to be drawn towards the bandage and travel up the access tract to strengthen the initial seal.

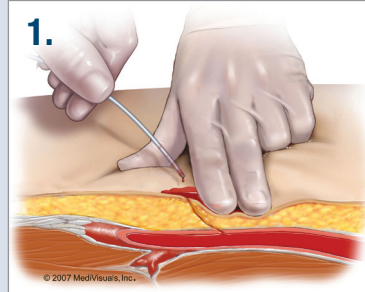
HemCon dressings are designed to maintain this seal and serve as a frontline support structure as the platelets and red blood cells continue to aggregate until hemostasis is achieved.

HemCon dressings do not rely solely on the clotting cascade to stop bleeding. The strong sealing action described allows the body to naturally clot.

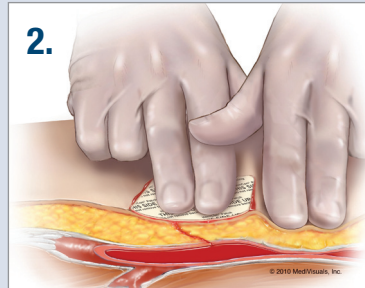
Distributed by



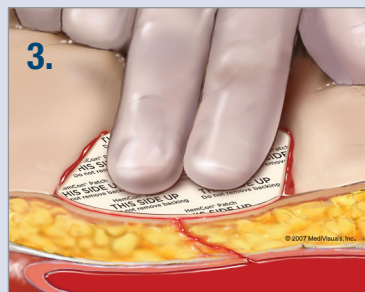
Cardinal Health | Healthcare Supply Chain Services – Medical
7000 Cardinal Place, Dublin, OH 43017
800.964.5527



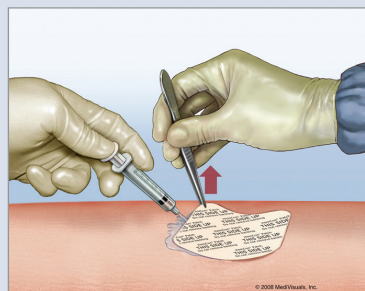
- Remove sheath following hospital protocol.
 - Allow a small amount of blood, approximately the size of a nickel, to surround the puncture site.
 - DO NOT cleanse the puncture site or moisten with saline solution. Blood is required to facilitate the unique adhesion process.



- With the printed side facing up, place the HemCon Patch directly on the puncture site.
 - Hold digital pressure across the entire vascular access tract until bleeding is controlled.



- Patch will have adhered where blood was present.
 - If it did not adhere, but hemostasis was achieved, patch can be held in place with an appropriate dressing to act as an antibacterial barrier.
 - If it did not adhere, and hemostasis was not achieved, repeat steps 1 and 2 with new patch.
 - After bleeding has stopped, secure the HemCon Patch with an appropriate dressing.
 - Recheck the wound for potential bleeding as necessary.



Removal Instructions

- The HemCon Patch can remain in place up to 48 hours.
- To remove the patch, irrigate with sterile water or saline while gently pulling up on the corner of the patch.
- Instruct discharged patients to soak the patch in the shower, and then gently peel off the patch.

NOTE: These guidelines should not supercede clinical judgment based on the medical condition of the individual patient.

This is a non-invasive hemostatic solution not intended to be a direct substitute for mechanical wound closure devices.

For In-Service: 877.247.0196
For more Information: www.hemcon.com